



---

# Monterey Bay Aquarium<sup>®</sup>

## Grounding Science in Place

Shannon Bertilacci, Education Specialist II  
June 20, 2017



Hawi

Honokaa

Waimea

Waikoloa Village

Mauna Kea

Hilo

Kailua-Kona

Hawaiian Paradise Park

Island of Hawai'i

Pāhoā

Captain Cook

Volcano

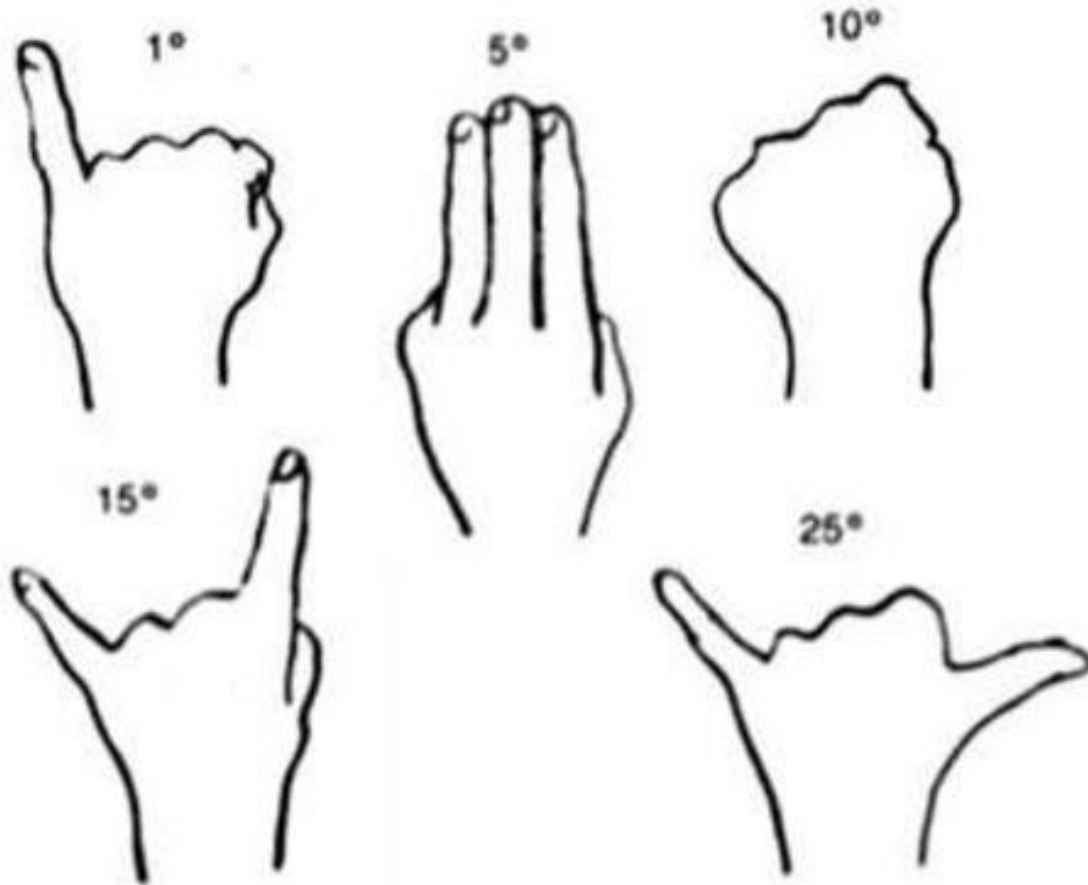
Ocean View



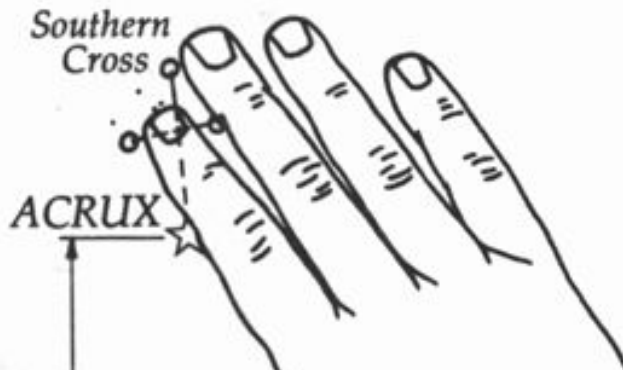




# Hands: Keys to the Universe







SOUTHERN

FIGURE 8. The angular height of Acrux to determine the position of the Southern Cross in this upright position Acrux is 10° lower than it would be if seen from the equator, which means that the canoe must be 10° north of the equator. Nainoa was also aware that at Honolulu (21°N) Acrux is 6° above the horizon when the Cross is upright, a height just equal to the 6° vertical span of the Cross itself, and thus especially easy to see. On the evening illustrated above, Acrux is 11° higher than at Honolulu, meaning that the canoe must be 11° of latitude closer to the equator than Honolulu, i.e., at 10°N.

(ʻŪānāiakamaʻiama) points south.



**BEWARE OF  
INVISIBLE COWS**

**MOST OF THE MAUNA KEA ACCESS ROAD BELOW HALE POHAKU IS OPEN CATTLE RANGE, AND THE COWS FREQUENTLY CROSS THE ROAD. DARK COLORED COWS ARE OFTEN INVISIBLE IN DARKNESS AND/OR FOG. USE EXTREME CAUTION AND DRIVE VERY SLOWLY IN THIS OPEN RANGE.**

**PLACE-BASED  
EDUCATION  
ENHANCES:**

**SELF-  
EFFICACY**

**ENTHUSIASM  
FOR  
LEARNING**

**CRITICAL  
THINKING**

**APPRECIATION  
OF  
NATURE**





# Best Practices

- “ABC” Activity Before Content
- Avoid activity mania; depth over breadth
- Don’t reinvent the wheel!
- Community resources
- Opt outside
- Relevant experiences
- Best practice is best practice!

# Best Practices: Processing Tools

- Turn and talk
- Think pair share
- Think, write, talk
- Back to back, front to front

Must we always teach our children with books?  
Let them look at the mountains and the stars up  
above. Let them look at the beauty of the waters  
and the trees and flowers on earth. They will then  
begin to think, and to think is the beginning of a  
real education.

- David Polis





Shannon Bertilacci  
Education Specialist II  
[sbertilacci@mbayaq.org](mailto:sbertilacci@mbayaq.org)  
831-648-4830

Thank you.