

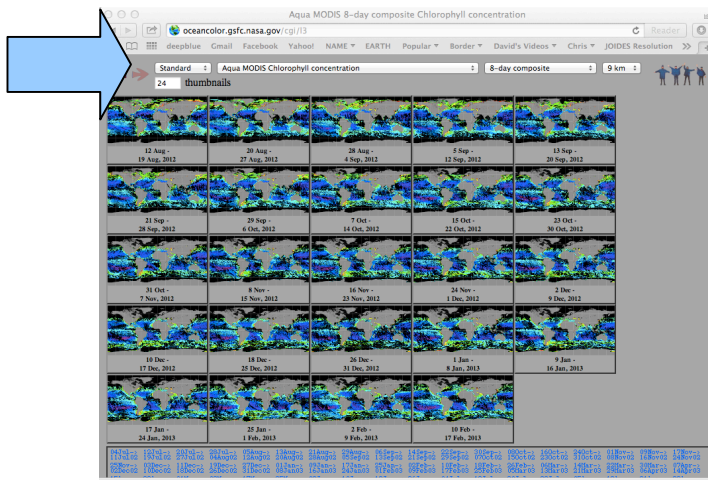
# Instructions for getting Chlorophyll and SST images from OceanColor website

1. Open web browser and type <http://oceancolor.gsfc.nasa.gov/> into the address bar. Select **Level 3 Browser** under the *Data Access* column



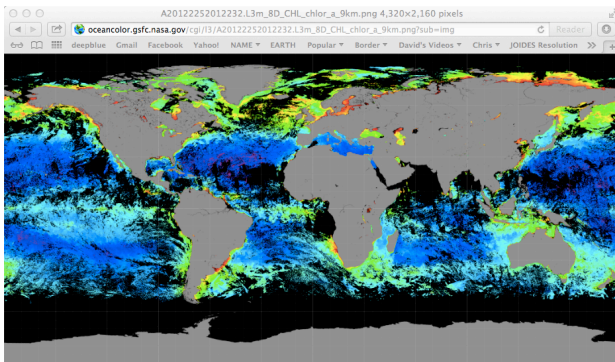
2. Make sure that **Aqua MODIS Chlorophyll Concentration** is selected, and select “**8-Day Composite**” from the drop-down menu on the right. Select the weekly image for the week you have been assigned. Write down the week here:

Example: 12 Aug 2012 to 19 Aug 2012



3. Click on the map image for the month from which you will be collecting data. The chlorophyll image will open large on your screen.

4. Sample image of chlorophyll for 12 Aug 2012 to 19 Aug 2012



5. Open a second web browser. Again, navigate to <http://oceancolor.gsfc.nasa.gov/>, and select **Level 3 Browser**.
6. Choose **Aqua MODIS Sea Surface Temperature (11  $\mu$  daytime)** from the drop-down menu. Select "**8-Day Composite**" from the drop-down menu on the right. Select the weekly image for the week you have been assigned. **You should use the same week for both images.**
7. Sample image of Sea Surface Temperature for 12 Aug 2012 to 19 Aug 2012

