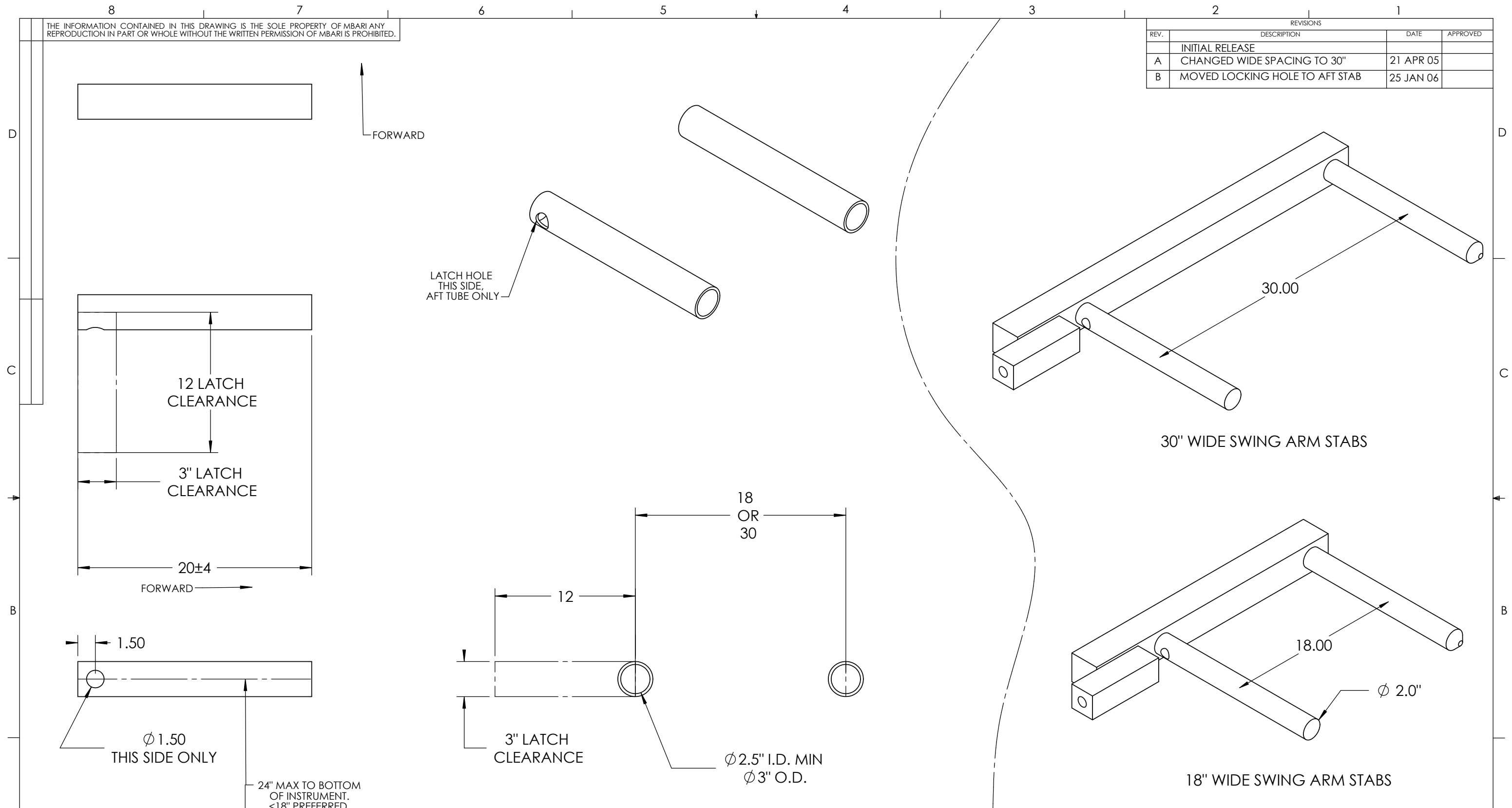


THE INFORMATION CONTAINED IN THIS DRAWING IS THE SOLE PROPERTY OF MBARI ANY REPRODUCTION IN PART OR WHOLE WITHOUT THE WRITTEN PERMISSION OF MBARI IS PROHIBITED.


REVISIONS			
REV.	DESCRIPTION	DATE	APPROVED
	INITIAL RELEASE		
A	CHANGED WIDE SPACING TO 30"	21 APR 05	
B	MOVED LOCKING HOLE TO AFT STAB	25 JAN 06	



- 1) MAX IN AIR WT = 200#
- 2) MAX IN WATER WT = 50#
- 3) INSTRUMENT MUST BE TRIMMED LEVEL IN WATER FROM SOFT LINE BRIDLE CENTERED ABOVE STABS.

BILL OF MATERIALS					
Shop / Q.C.	UNLESS OTHERWISE SPECIFIED TOLERANCES ARE:			APPROVALS	DATE
Inspector	1 PLACE DIM ±1/16	2 PLACE DIM ±.02	3 PLACE DIM ±.005	ANGLES ±1°	M. TALKOVIC 25 JAN 06
Shop Foreman	1. DIMENSIONS ARE IN INCHES			ENGINEER	M. TALKOVIC 25 JAN 06
Engineer	2. DIMENSION LIMITS HELD AFTER PLATING.			CHECKED	
NEXT ASSY Description	NEXT ASSY Number	3. REMOVE BURRS AND SHARP EDGES .015 MAX.			PROJECT NO. XXX
		4. MACHINED FILLET RADII .0150-.030.			PROJECT ZZZZZZZZ
		5. MACHINED DIAMETERS ON A COMMON CENTERLINE CONCENTRIC WITHIN .005			WEIGHT
		6. PERPENDICULARITY & PARALLELISM OF MACHINED SURFACES .002 PER INCH. MAX .012 INCHES FOR SINGLE SURFACE.			SCALE 1:8
Application	DO NOT SCALE DRAWING			CAD FILE: MECH ENG ON TORNADO	SHEET 1 OF 1

Monterey Bay Aquarium Research Institute
MBARI
7700 Sandholdt RD.
Moss Landing, CA 95039
PH: (831) 775-1700



swing arm stab geometry (2)

SIZE B	DWG. NO. 100XXXDWG	REV. B
--------	--------------------	--------